

wallbox 

Pulsar Pro

You're a

PRO

It's a
Pro

The ultimate EV charger
for shared spaces,
made for Pros like you.



SolarWise

WAGGA WAGGA

02 6971 0084

Built for Businesses and EV drivers alike, Pulsar Pro is the new shared charging solution designed to fit perfectly with condominiums, workplaces and fleets. It's a reliable, accessible charger for users and an easy-to-manage, cost-effective solution for charge point operators and installers.

PULSAR PRO

What's in it for your business?



FASTER INSTALLATION

- **Pre-configured 4G** provides out-of-the-box installation, reducing commissioning time and potential errors.
- **3rd-party 4G & OCPP factory configuration** available as an option to reduce installation time.
- **Backplate design** to make installation easier than ever.

4G

IMPROVED SERVICE & MAINTENANCE

- **4G connectivity** ensures remote software updates.
- **Enhanced Security** prevents unauthorized manipulation, physical damage and cyber-attacks.
- **Charging cable** can be easily replaced in case of damage.



COST OPTIMIZATION

- **Dynamic Power Sharing up to 100 chargers** translates into more energy efficiency and lower costs.
- **Internal meter with less than 2% error** improves accuracy of energy transfers.*
- **Integrated PEN fault protection** eliminates the need for an earthing rod.**



REMOTE MANAGEMENT

- **myWallbox business** enables charger management, payments, user access, reporting and more.
- **OCPP compatible** to integrate into any backend.
- **Partner API** available for custom integrations.*

*Contact your sales representative for more information.

*Factory calibrated. Subject to local regulations.
**UK only

PULSAR PRO

What's in it for the end-user?



RELIABLE

- **4G** to enjoy full connectivity, minimal interruptions and increased uptime.
- **Robust design** protects against extreme weather, water, dust and impact.
- **Advanced CPU** for higher processing speeds and performance.



EASE OF USE

- **Attractive and compact design** with intuitive Halo Light to show charging status.
- **Easy authentication and payment** with RFID, NFC* and myWallbox App.

*HW ready. Contact your sales representative for more information.



PEACE OF MIND

- **Encrypted communication** that protects personal data.

ENERGY MANAGEMENT

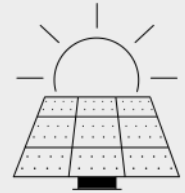
Compatible with all Wallbox Energy Management Solutions

Solutions that maximize savings and support growing charging networks.

ECO-SMART

Solar EV Charging

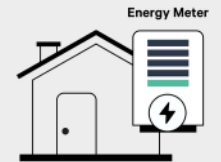
Use the surplus energy from a building's solar panels to avoid high grid energy prices. Charge with 100% solar energy or a mix of solar and grid energy.



POWER BOOST

Dynamic Load Balancing for Single EVs

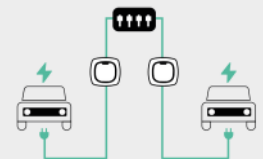
Charge at the highest speed possible, depending on the building's real-time energy use, without having to upgrade the electrical infrastructure.



DYNAMIC POWER SHARING

Dynamic Load Balancing for Multiple Vehicles

Scale your charging infrastructure without expensive electrical retrofits. Intelligently distribute energy now up to 100 chargers.



Ask your sales representative how you can upgrade your smart charging system today.

Power meter required
Eco-Smart not compatible with Power Sharing and OCPP



MYWALLBOX PORTAL

Includes the myWallbox Business license

The one-stop platform for managing any charging network.

Manage multiple users, chargers and locations.

Open up your network for public use.

Get real-time updates and statistics.

Implement payment options, like Pay-per-Charge or Pay-per-month.

Access to Dynamic Power Sharing.



PULSAR PRO

Technical Specifications

General specifications

Model	Pulsar Pro
Colour	Black & Grey
Cable Length	5m / 7m
Charging Mode (IEC 61851-1)	Mode 3
Dimensions	198mm x 201mm x 99mm (without cable)
Weight	1.3kg (without cable)
Operating temperature	-30°C to +50°C
Storage temperature	-40°C to +70°C
Regulatory information	CE, UKCA, EAC and RCM Mark. IEC 61851-1, IEC 61851-21-2, IEC 62196, BS 7671, IEC 60364. RED Directive 2014/53/EU and RoHS Directive 2011/65/EU Compliant with UK regulations on smart charging
Cybersecurity	Tamper detection, secure update, secure boot, secure storage & encrypted communications
Charging power	7,4kW / 11kW [1] / 22kW
Rated Voltage AC $\pm 10\%$	230V / 400V
Rated Current	32A (1P) / 32A (3P)
Connector Type (IEC 62196)	Type 2
Cable Width	up to 13mm2
Configurable Current	from 6A to rated current
Rated Frequency	50Hz / 60Hz
Protection Rating	IP55 / IK10
Surge Category	CAT III
Residual Current Detection	DC 6mA
RCD	RCD Type A is required [2]
Internal metering	Class A (Error $\leq 2\%$). Factory calibrated

User interface & Communications

Connectivity	4G, WiFi, Bluetooth
User Identification	RFID, myWallbox App & Portal
User interface	myWallbox App & Portal
External communication interface	OCPP, partner API and SDK
Charger Status Information	Halo RGB LED, myWallbox App & Portal
Included Features	Schedules, Statistics, lock/unlock/autolock, charger remote control, User Management, Pay per Month, Pay per charge, Power Sharing
Optional features [3]	Power Boost, Dynamic Power Sharing, Eco-Smart, External MID
HW ready features	NFC



[1] Limited by Software. [2] According to local regulations. [3] Power meter required

PRO
Pulsar
Pro
Pulsar
Pro



PRO
Pulsar
Pro
Pulsar
Pro



- ☀️ *Solar Power*
- ☀️ *Battery Storage*
- ☀️ *Heat Pump Hot Water*
- ☀️ *Energy Management*
- ☀️ *Energy Audits
& Consulting*
- ☀️ *EV Chargers*
- ☀️ *On-Grid*
- ☀️ *Off-Grid*

