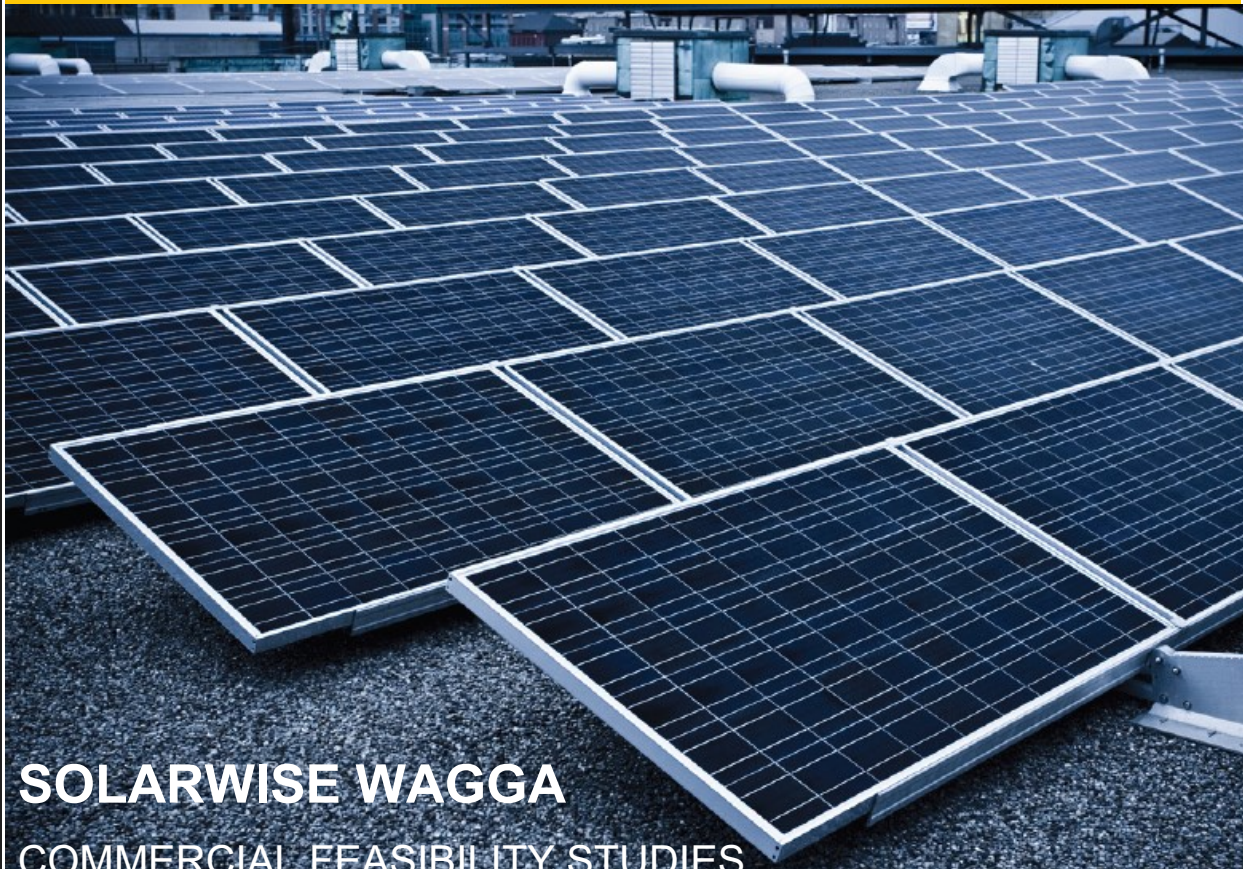




☎ 02 6971 0084

HAVE YOU CONSIDERED SOLAR POWER FOR YOUR BUSINESS?



SOLARWISE WAGGA
COMMERCIAL FEASIBILITY STUDIES



COMMERCIAL SOLAR ASSESSMENTS

SolarWise Wagga's commercial solar assessments are conducted by our solar PV experts and provide information and advice on:

- The viability of solar power for your business.
- Optimum solar PV system capacity.
- Financial feasibility and analysis.

Our feasibility studies are based on years of experience designing, installing, and maintaining commercial solar PV projects.



COMMERCIAL SOLAR BENEFITS

The largest benefit for businesses is that their main operating hours are during the day when the sun is shining. This allows for the bulk of the electricity cost to be offset.

Additionally, businesses benefit greatly from solar power in several ways:

- Insulate against rising energy costs.
- Save on upfront costs via Small-scale Technology Certificates (STC).
- Generate clean power, reducing the impact of pollution and greenhouse gas emissions by generating clean power for years to come.
- Adding value to your business or property.
- Solar PV Systems can be depreciated. GST registered businesses can claim back the GST on all systems.
- System payback can be as fast as 3 years.
- Achieve internal rate of return as high as 40%.
- Create positive cash flow.

FEASIBILITY STUDIES

Before commencing any large solar project, the feasibility of the venture must first be established.

Feasibility Studies are conducted to assess the viability and profitability of a project and are an important initial step when developing a commercial solar installation.

ASSESSMENT SERVICES

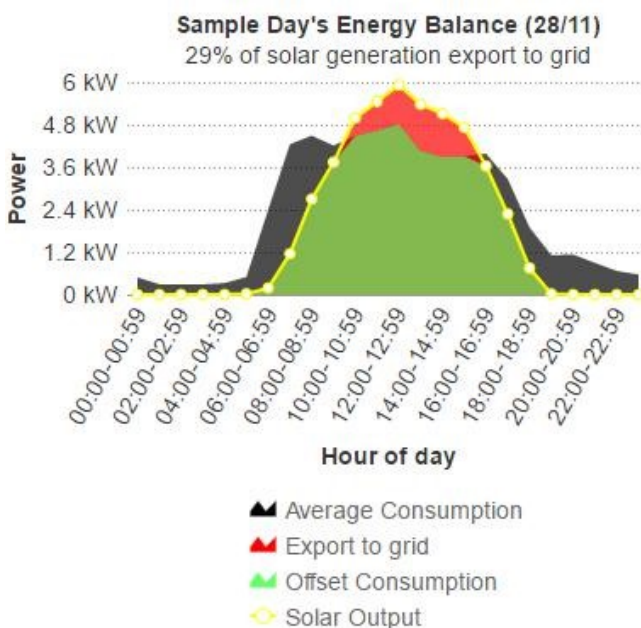
Level 1 – Initial Viability Assessment.

The purpose of a Level 1 assessment is to determine the general viability of installing a solar PV system on a specific site or business and consists of the following:

- **Electricity Bill and Energy Usage Analysis**
- **Identify Existing and Ideal Tariff Options**
- **Site survey, Roof and Structural Assessment**
- **Initial Shading Analysis to identify possible problems.**
- **Identify possible areas of load reduction (e.g.; lighting efficiency, power factor correction, heating & cooling efficiency)**
- **Identify the types of loads connected throughout the site.**
- **Present System Sizing Recommendations.**

Level 1 Assessment - Standard fee: \$267

Example



Level 2 – Comprehensive Feasibility Assessment and Financial Analysis.

A Level 2 assessment builds upon the outcome and information obtained from a Level 1 assessment. Site-specific information is examined in more detail, and a Financial Feasibility Analysis & Report is completed.

The assessment aims to identify the most financially profitable outcome for your proposed solar PV project and consists of the following:

- **Meter data/load profile acquisition**
- **Data Logging, load analysis.**
- **Detailed shading analysis where required**
- **Detailed modelling is conducted to provide an optimum solar PV system size**
- **Finance options presented and discussed.**
- **Financial assessment & modelling**

Example



A commercial solar assessment includes a detailed financial assessment and modelling of the costs and revenues of the proposed solar PV installation over its projected design life.

Level 2 Assessment fee: from \$449

A financial analysis presentation will be provided that includes a relevant selection of the information below:

- **Annual bill before & after solar**
- **Cheaper electricity (comparison)**
- **Energy Sources**
(Solar generated vs Grid imported)
- **Internal rate of return**
- **Investment payback period (years)**
- **Repayments**
- **Return on Investment**
- **Financial Ownership (cash flow positive, etc.)**
- **Annual Breakdown of benefits**
- **Electricity expenditure before & after solar**
- **Annual solar savings**
- **Cumulative revenue**
- **Annual electricity expenditure**
- **Projected electricity prices**
- **Sample day's energy balance**
- **Weekly consumption**
- **Monthly consumption**
- **Monthly production**

Our Viability and Feasibility assessments are free of obligation to purchase a solar system from us.

When a Solar PV system installation is purchased from us after the completion of a level 2 assessment, the fee paid for the assessment will be deducted from the quoted system cost.

SOLARWISE WAGGA

WE MAKE IT EASY FOR YOU
TO SWITCH TO CLEAN,
RELIABLE SOLAR ENERGY
AND TAKE CONTROL OF
YOUR ENERGY COSTS

ABOUT US

SolarWise Wagga Pty Ltd is a locally owned Company established in July 2009.


Since its foundation, SolarWise Wagga has continued to develop as a specialist provider of sustainable and renewable energy solutions, including commercial solar power systems.



SOLARWISE WAGGA PTY LTD

ACN: 145 473 061

 **02 6971 0084**

 enquiries@solarwiseww.com.au

71 Copland Street
East Wagga Wagga
NSW 2650

WHAT YOU NEED TO DO

STAGE 1

Conduct a feasibility study to assess the viability and profitability of solar

STAGE 2

Install a quality, high-performance system using professional installers

STAGE 3

Monitor and analyse energy production and consumption to maximise ROI